

We Have A Winner!

You constantly see competitions for cars, world travel etc and I for one always wonder if they are for real. Well in our Clinics there is a current promotion to win a Ford Fiesta Sport car with the purchase of qualifying Merial flea products. **The first nationwide draw was held last week and one of our Client's has won!**

There is a second draw for another Ford Fiesta Sport and it is not held until the 15th December so there is still a chance of you to be in to win as well. In addition there are draws for the model remote controlled cars (not quite the real thing).

On the subject of winning those who have invites to the upcoming Vets North Farmer Christmas Party at the Helensville Bowling Club will also have the opportunity to win spot prizes as well as a free feed & drink. (Remember the 23rd November, from 5 pm).

Mark Anderson



WIN one of TWO FORD FIESTA SPORT Cars!

Purchase any 3 or 6 pack of FRONTLINE® Plus, 3 pack of NEXGARD® Chewables or NEXGARD SPECTRA® or 2 x BROADLINE® and go into the draw to WIN!
Plus WIN one of 20 Ford Fiesta remote control cars!

*Purchase any 3 or 6 pack of FRONTLINE® Plus, 3 pack of NEXGARD® Chewables or NEXGARD SPECTRA® or 2 x BROADLINE® to go in the draw to WIN! Entry form available in clinic, or visit our online entry site www.vetsnorth.co.nz to enter details and be in to win. Promotion will have two car draw dates - 20 Oct and 15 Dec 2016. Remote control car draw date is 15 Dec 2016. Promotional period incorporates purchases between 01 Sep-01 Dec 2016. Car colour is interchangeable if stock is available in NZ. Prize is non-transferable for cash, but is applicable to other Ford models under registration with Ford New Zealand. Winner is required to supply proof of purchase to claim prize.



FRONTLINE®
Plus



NexGard®
(chewable) Chewables



NexGard®
SPECTRA



Broadline®
spot on solution for cattle



Farmer Christmas Party

23rd November

**Helensville Bowling Club
38 Awaroa Road, Helensville**

Invitations will be out this week.

Please RSVP to : Chelsear@vetsnorth.co.nz
Arlene@vetsnorth.co.nz



Cattle Mating

The impact of the last month of wet and gray weather is now being felt in the dairy cow submission rate. The Equine Vets are also seeing less activity in the breeding mares. The reasons are in the sunlight (less sunlight equals less sugar in the grass) and in feed utilisation (muddy paddocks can not be grazed as effectively).

There are several possible solutions. Feed more supplements, once a day milking, or CIDR treatment of cows. Remember that with each passing day another day's milk



production is lost from next season and the chances of the cow ending up empty increases. The economics of treating anoestrus cows show it is worth while, even at a \$5 payout, and that the earlier you do it the more profitable it is. The costs of CIDR treatment have not increased this year.

0800 VTS NTH

AFTER HOURS: 0274 957 986

68 Access Road, Kumeu - P: 09 412 9016 - Kumeu@vetsnorth.co.nz

45 Commercial Road, Helensville - P: 09 420 8325 - Helensville@vetsnorth.co.nz

www.vetsnorth.co.nz



Poisonings

We have seen a rash of poisoning cases over the last couple of weeks. Most of these have been slug bait poisoning of dogs. Although the packet may say that it contains an animal repellent this is often not effective. The most recent case was of a dog



who ate an entire pack of slug bait. It was very sick and the treatment will be expensive but it is now recovering.

The other common poisoning of dogs is with rat bait, although we do see drench poisoning from over dosing & anti freeze poisoning from car radiator fluid not uncommonly. In fact one of the most common causes of death in recently weaned calves is drench poisoning from ivermectin overdose.

No products are completely safe, even water can kill you, so take care to ensure that the correct dose is given and that only the intended animals are treated. Using the safest products will reduce the number of problems. Don't drench young stock with ivermectin products, use ivermectin instead as it is much less toxic. Store products well away from dogs and preferably in a solid container. If you are using poisons use the safest ones. Quash Slug Bait is much safer for dogs than Blitzem. If you are baiting for rats fix the baits so the rats cannot move them and place them where the dogs cannot get to them.

The success that we have with treating poisonings depends on knowing what the product was (bring the container if you can) and being able to start treatment early. In many cases if the dog has only just eaten the product we can make them vomit and the problem is mainly solved.

Farm Drop Off Service

The delivery service runs every fortnight. Currently the South Head run is fortnightly & the Kaukapakapa run is as requested. This is a free service, the best method of contact is to phone the Helensville branch or email your requests to: chelsear@vetsnorth.co.nz

Fibre in the Diet



Over the spring the push is to maximise grass growth & to maintain as high a digestibility as possible, as this maximises intake. This often leads to high usage of nitrogen

fertilizers and a resultant very lush grass diet. Unfortunately one negative of the lack of fibre in the diet can be a disturbance in the rumen function. This can result in diarrhoea & weight loss or an increase in the incidence of laminitis, which will show as increased lameness. This problem is exacerbated by the high protein level of modern ryegrasses.

The solution is to ensure there is some fibre in the diet, but not so much as to depress intake. As with most things in farming optimum performance is a balancing act.

Along those lines, with the weather as it is don't be in too much of a hurry to stop magnesium supplementation or you may depress milk production.

Calf Drench

There are a couple of common errors I regularly see when talking to farmers about calf drenching. The first & most important is; **CALVES MUST BE DRENCHED WITH A COMBINATION DRENCH UNTIL AT LEAST ONE YEAR OLD.** The reason for this is that all the Cooperia worms are ivermectin drench resistant. So any straight ivermectin drench (Cydectin, Genesis, Bomectin, Dectomax etc) will not work. The calves won't die, but they won't grow as they should either.

The second error is using ivermectin drenches in calves less than 120kg body weight. These drenches are too toxic. Use ivermectin containing drenches. (The same applies to young lambs). ivermectin is typically found in many pour-on drenches and double & triple oral combination drenches.

The safest & most economical way to drench calves is to use Arrest Oral drench (a white & levamisole combination). Better, but more expensive options are Iver Matrix Calf (triple combination oral) or Eclipse injection. For lambs use First or Iver Matrix Lamb.

0800 VTS NTH

After Hours: 0274 957 986

68 Access Road, Kumeu - P: 09 412 9016 - Kumeu@vetsnorth.co.nz
45 Commercial Road, Helensville - P: 09 420 8325 - Helensville@vetsnorth.co.nz

www.vetsnorth.co.nz





IN KEEPING WITH TRADITION
Ham on the Bone OR Continental Carve Leg Ham

Serving up real quality again this festive season.

Offer only available from participating vet clinics.

1/2 HAM QUALIFYING PURCHASES:

- ARREST® 2x 20L
- ARREST® Hi-Mineral 2x 20L
- ECLIPSE® E Injection 2x 500mL
- ECLIPSE® Pour-On 1x 2.5L
- EPRINEX® 2x 5L
- EPRINEX® 1x 20L
- EPRINEX® Delta 2x 5L
- EXODUS® 1% Injection 4x 500mL
- EXODUS® LAI Injection 4x 500mL
- EXODUS® Pour-On 2x 5L
- EXODUS® Pour-On 1x 20L
- EXODUS® Se 1x 20L
- FIRST® Hi-Mineral 1x 20L
- GENESIS® Hi-Mineral 2x 20L
- GENESIS® Injection 4x 500mL
- GENESIS® B12 + Se Injection 4x 500mL
- GENESIS® Pour-On 1x 5L
- GENESIS® Pour-On 1x 10L
- GENESIS® Ultra Oral Hi-Mineral 1x 20L
- GENESIS® Ultra Pour-On 1x 5L
- IVER MATRIX® Tape Hi-Mineral 1x 10L
- IVER MATRIX® Tape Hi-Mineral 1x 20L
- IVER SWITCH® Tape Hi-Mineral 1x 10L
- IVER SWITCH® Tape Hi-Mineral 1x 20L
- IVOMECS® Plus 4x 500mL

MATRIX® 1x 20L
MATRIX® C 1x 10L
MATRIX® C 1x 20L
MATRIX® Hi-Mineral 1x 20L
MATRIX® Hi-Mineral 1x 50L
MATRIX® Mini-Dose 1x 10L
MATRIX® Mini-Dose 1x 20L
MATRIX® Tape Hi-Mineral 1x 10L
MATRIX® Tape Hi-Mineral 1x 20L
SWITCH® 1x 20L
SWITCH® C 1x 10L
SWITCH® C 1x 20L
SWITCH® Fluke10 1x 5L
SWITCH® Fluke10 1x 10L
SWITCH® Hi-Mineral 1x 20L
SWITCH® Hi-Mineral 1x 50L
TRIMOX® 1x 20L
CALF PACK (1x 5L ARREST, 1x 2.5L ECLIPSE + 30mL Gun)

2 X 1/2 HAM QUALIFYING PURCHASES:
ECLIPSE® Pour-On 1x 5L

3 X 1/2 HAM QUALIFYING PURCHASES:
ECLIPSE® Pour-On 1x 10L

Days in Milk

One of the determiners of dairy farm income is the number of cow days in milk. In our seasonal supply system the cows all basically stop milking on the same day. So the variation is how soon after the start of calving that the cow actually calves. The cow that calves six weeks after the start of calving will have a shorter milking season & so earn you less money.

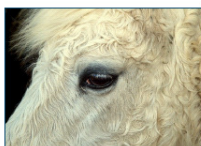
Today you are making decisions that will affect the number of cow days in milk that you will have next year, & that will impact on your income. And that is one of the things that you can have an impact on (unlike the payout or the weather).

Treatment of non cycling cows to get them to cycle sooner is important. Energy balance comes first (feeding level, supplements, once a day milking) along with general health (mineral levels, parasitism, magnesium). The economics of the use if CIDRs show that even at \$5 a Kg they will give a return on investment, however, the return decreases rapidly as the mating season progresses. Treatment of cycling cows with prostaglandins pre mating can also get you a few more days, as can the use of short gestation bulls.

BUY 6, GET 1 FREE

Purchase 6 Seresto Collars and get 1 Free

This is a fantastic deal for your working dog team. Please contact Chelsea or Arlene at Vets North Helensville if you are interested in this offer.



Don't Miss Out

Free blood testing for Equine Cushings (P.P.I.D) in November

Get your free blood test



At home or bring your horse to the clinic



The laboratory fees are covered for your horses P.P.I.D test

Contact the Clinic & arrange a time for your **FREE** blood test

09 412 9016 or 0800 VTS NTH