



Vets North on farm checks have been under way and it has been a real pleasure to be able to come out on farm and talk about working dog health. After all, without them what would you do?

Mark and I have completed several checks with the help of Robbie from Eukanuba. With his wealth of knowledge and experience on some large stations, he is able to offer some great tips; from the dietary needs of working dogs to kennel design & maintenance.

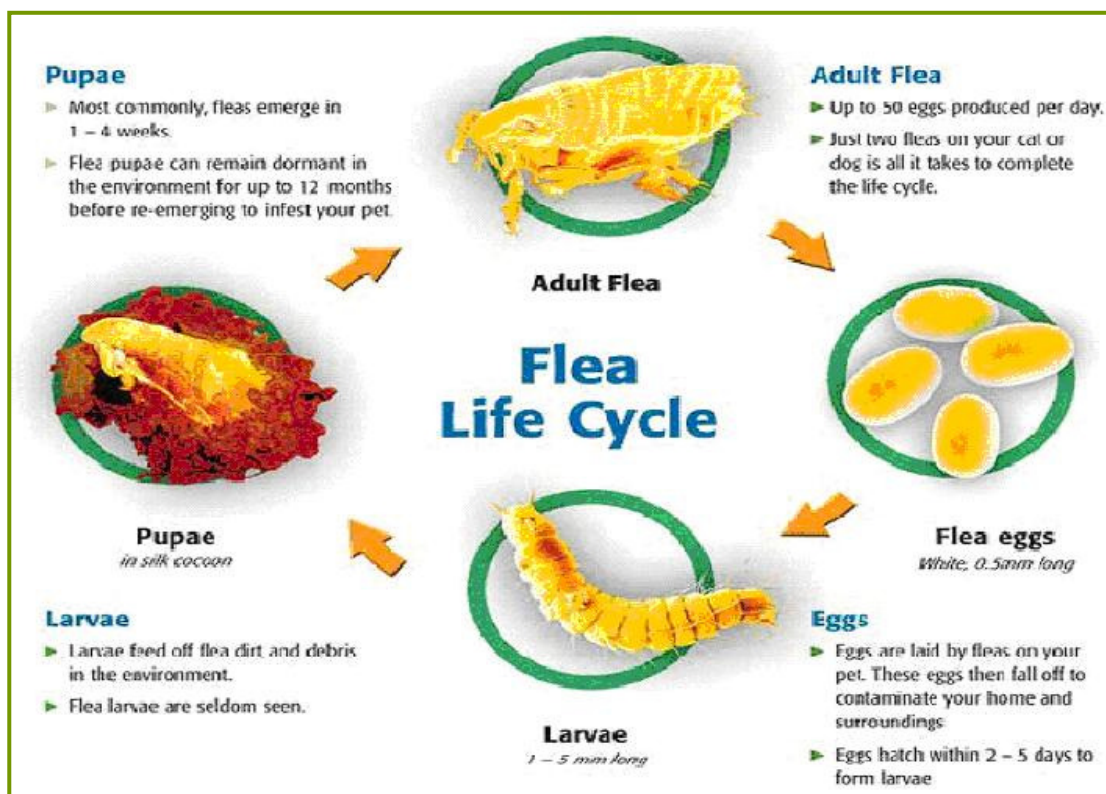
Remember just by completing an On-Farm check you go in the draw to WIN a year's vaccination for up to 6 of your working dogs.

Chelsea & the Vets North Team

The Creepy & the Crawly

Even though the temperatures have dropped, for those of us in the North Island, external parasites are a year round problem for our dogs. Fleas, ticks and lice can be a burden for our team.

Dogs with fleas can be prone to secondary skin infections. Infection occurs when the dogs scratch raw patches of skin and introduce bacteria into the dermis. Most of all, fleas are uncomfortable and irritating. Imagine having to get up in the morning and run a marathon after a restless night scratching mosquito bites.



There are plenty of different products on the market now that can be economical for large numbers of dogs needing treatment.

One solution is the Seresto Collar, a flea, tick and lice prevention collar that lasts 8 months. It is water resistant and provides a low dose release of active ingredients which means the collar protects for the whole 8 months.

We give a discount on bulk Seresto Collar purchases. If you are interested in fitting your team with Seresto collars, get in touch with the Vets North Team to organise an order.

0800 VTS NTH

AFTER HOURS: 0274 957 986

68 Access Road, Kumeu - P: 09 412 9016 - Kumeu@vetsnorth.co.nz
45 Commercial Road, Helensville - P: 09 420 8325 - Helensville@vetsnorth.co.nz

www.vetsnorth.co.nz



Rural Dog Focus

June / July 2016



The Wet, The Wind & The Cold

It is important for your dogs to have a kennel that can provide shelter from the weather. Dogs will use energy and burn fat stores shivering and trying to keep warm. Check your kennels for drafts & fix up any holes or wear & tear around the kennel edges or around the back doors.

Kennels lifted off the ground will help with cleanliness and also prevents the floor from being damp and cold.

Provide a base surface if possible to help with warmth. Hessian mats are a great idea. You can buy ready made beds from the rural stores or even cut your own. The important thing is providing a layer between the dog and the kennel floor. It makes a huge difference in the colder months.

Remember the older dogs in the team will suffer more during the colder months. Arthritis is more painful in the cold. You can help ease this discomfort by starting them on an anti-inflammatory or joint supplement. Using as needed on 'bad' days or days where they have done heavy work, means it doesn't have to be costly.

If you think one of your dogs could benefit from having some anti-inflammatories on hand, feel free to give us a call and we can arrange a Vet to start a prescription for you.



W.O.F your Team

Give your team of dogs the once over and make sure they are fighting fit for the next season



ON FARM HEALTH & NUTRITION CHECK

We are supplying better products, promotions and awareness for the important members of your working team.

Experience the convenience of the vet coming to you. Get any health issues checked, nutrition and parasite programs sorted before the busy season starts.

Sign your dogs up for this service and you will go in the draw to win a 20kg bag of Eukanuba Premium Performance.

In addition, if you sign up & complete the Team health checks between March & June you will go in the draw to WIN a year's vaccinations for up to 6 dogs for FREE!

For enquiries email Chelsea at: ChelseaR@vetsnorth.co.nz

RECEIVE
\$15 OFF
ANY BAG OF
EUKANUBA
18/19/20Kg
DOG FOOD

NZ working dogs are athletes. Keep them in the field for longer with Eukanuba Premium Performance as fuel!

Offer available 1st - 30th June 2016



0800 VTS NTH

AFTER HOURS: 0274 957 986

68 Access Road, Kumeu - P: 09 412 9016 - Kumeu@vetsnorth.co.nz
45 Commercial Road, Helensville - P: 09 420 8325 - Helensville@vetsnorth.co.nz

www.vetsnorth.co.nz

